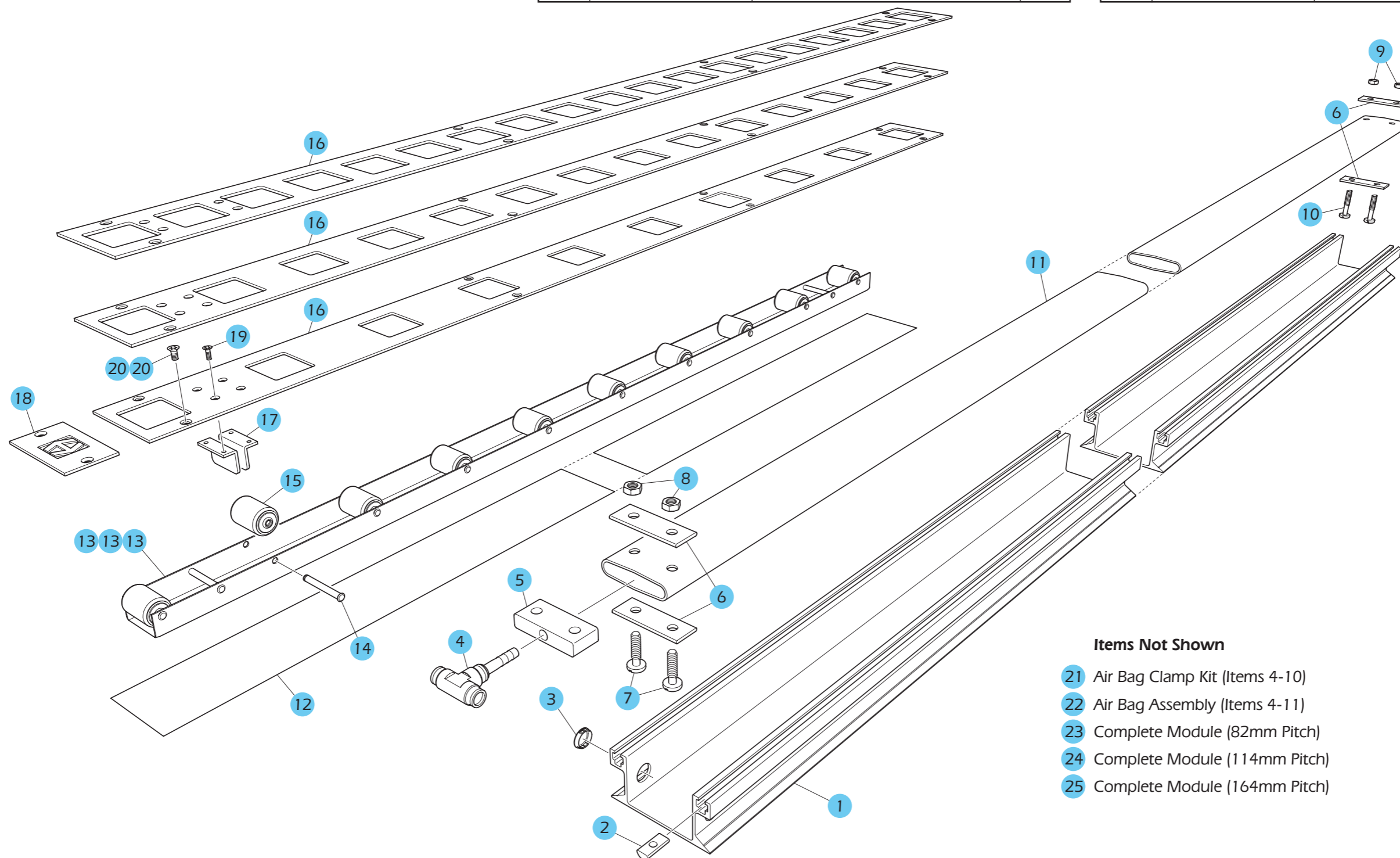




MK9.5.2 Flat Top Plate 3.2mm: Diagram and Parts List

ITEM	PART NO.	DESCRIPTION	QTY
1	PR09-A01-O-3200	Main Channel, Extrusion 3.2m	1
2	CNB001	Nut Bar	9
3	1EF001	Main Channel Snap Bushing	2
4	2BH001	Air Bag Tee	1
5	2CE001	Rubber Insert Plug	1
6	Available in Kit Only	Clamp Plate	4
7	Available in Kit Only	M8 x 30mm Pan Hd Screw	2
8	Available in Kit Only	M8 Nyloc Nut	2
9	Available in Kit Only	M8 Nyloc Nut	2
10	Available in Kit Only	M8 x 20mm Pan Hd Screw	2
11	2AC001	Air Bag 3.2m Long	1
12	1EE001	Acetal Strip	1
13	PR09-A03-082	82mm Pitch	2
	PR09-A03-114	114mm Pitch	2
	PR09-A03-164	164mm Pitch	2

ITEM	PART NO.	DESCRIPTION	QTY
14	CRP001	MK4 Roller Pin	-
15	PR09-B01	MK9 Roller Assembly	-
16	PR09-A05-082-2	82mm Pitch	2
	PR09-A05-114-2	114mm Pitch	2
	PR09-A05-164-2	164mm Pitch	2
17	CGL002	MK9 Guide Angle	2
18	CLG011	MK9 3.2mm Logo Plate	1
19	4FB004	M5 x 12mm Taptite Screw	4
20	4AD027	Top Plate Screw, M6 x 15mm (US only)	9
	4AD029	Top Plate Screw, M6 x 15mm (ROW)	9
21	PR-ABCKIT1.5	Air Bag Clamp Kit	1
22	PR04-A02-3200	Air Bag Assembly	1
23	PR09.5.2-082	Complete Module 82mm Pitch	1
24	PR09.5.2-114	Complete Module 114mm Pitch	1
25	PR09.5.2-164	Complete Module 164mm Pitch	1



Items Not Shown

- 21 Air Bag Clamp Kit (Items 4-10)
- 22 Air Bag Assembly (Items 4-11)
- 23 Complete Module (82mm Pitch)
- 24 Complete Module (114mm Pitch)
- 25 Complete Module (164mm Pitch)