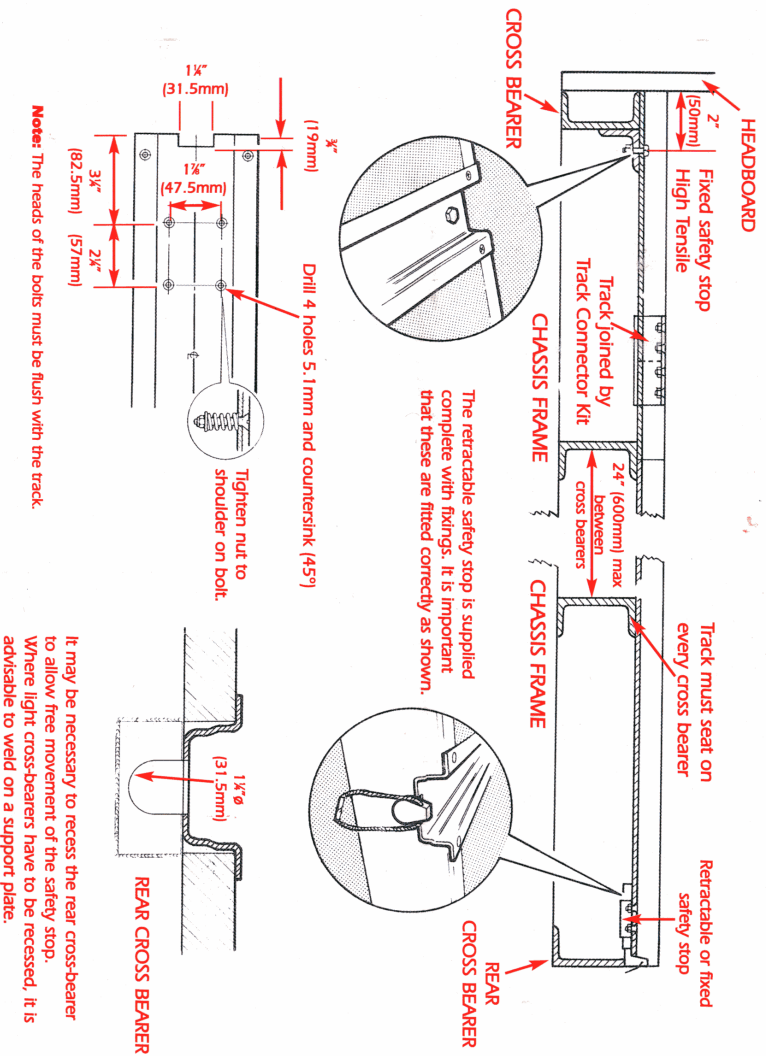
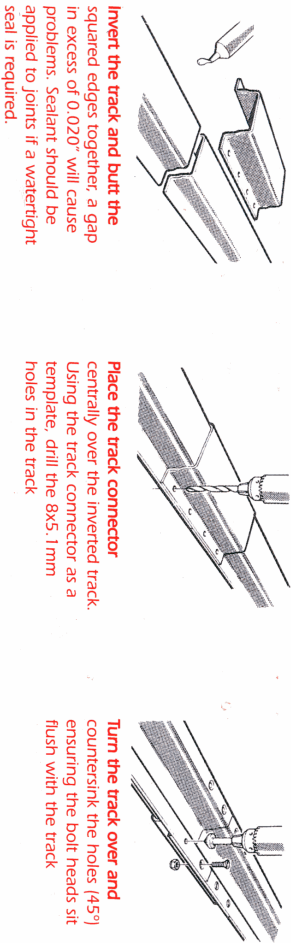


3. Emergency safety stops must be installed at each end of track.



Important: Ensure the safety stops action is unobstructed and always returns to the 'set' position.

4. Track must be only joined with Joloda track connectors supplied with 8x5mm bolts and self-locking nuts per connector. It is important to plan the positioning of the track to avoid coinciding with cross bearers.



Remember: The track must be flat, a step of more than 0.010" between tracks may cause running problems. The floor must be relieved to accommodate the track connector and its fixings. Any gap between floor and track must normally be sealed.

Joloda

Joloda (International) Ltd
8 Stoke Road
Garston, Liverpool
England L19 2NY

Telephone: 0151 427 8954-5
International: +44 151 427 8954-5
Facsimile No: 0151 427 1393

It is the policy of JOLODA INTERNATIONAL LTD to improve their design specifications whenever new materials or innovative methods may prove advantageous. Therefore they reserve the right to alter or amend information contained in this leaflet without prior notification and refuse to supply where application is against JOLODA recommendations.

Joloda

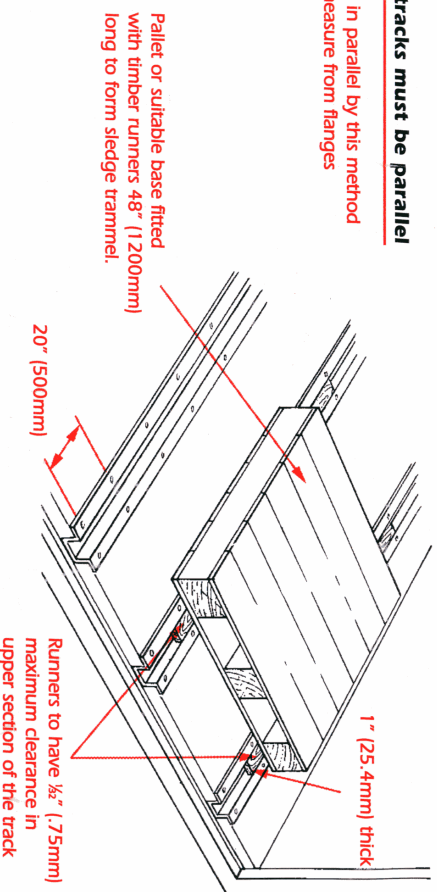
Installation instructions for Skate and Track Systems

If in doubt please get in touch with Joloda plc for advice pertaining to your particular installation problem

It is important for the safe and efficient operation of Joloda Skates that the Joloda Track is correctly installed. Points to be observed are:

1. The tracks must be parallel

Set tracks in parallel by this method
Do not measure from flanges



2. The base of track must rest on each cross bearer or have other adequate support along its full length commensurate with the loading anticipated. **Under no circumstances should the flanges of the track carry any loading.** They are for location fastening only.

Track spacing depends on pallet size, diagram shows optimum position for maximum support

